

CIRJE-F-30

**Schumpeterian Dynamics:
A Disequilibrium Theory of Long-run Profits**

Katsuhito Iwai
University of Tokyo

December 1998

Discussion Papers are a series of manuscripts in their draft form. They are not intended for circulation or distribution except as indicated by the author. For that reason Discussion Papers may not be reproduced or distributed without the written consent of the author.

To appear in Lionello Punzo ed.,
Cycle, Growth and Structural Change, (London: Routledge)

**SCHUMPETERIAN DYNAMICS:
A DISEQUILIBRIUM THEORY OF LONG-RUN PROFITS**

by

Katsuhito Iwai*

Faculty of Economics

University of Tokyo

December 1998

* This is a simplified version of the paper I presented at ISER XI Workshop at the Certosa di Pontignano, Siena, on July 1, 1998. Since the workshop paper developed a series of new evolutionary models, it was very long and mathematically complicated. The present paper has used the simpler evolutionary model of Iwai [1984b] so that I can present the same thesis much more economically. A revised version of the workshop paper is also available under the title of "Towards a disequilibrium theory of long-run profits – Schumpeterian perspective," *Discussion Paper Series CIRJE-F-31*, December 1998 (Faculty of Economics, University of Tokyo). I am grateful to the participants of the Workshop for their helpful comments and suggestions.

<ABSTRACT>

In the traditional economic theory, whether classical or neoclassical, the long-run state of the economy is an equilibrium state in which all profits in excess of normal rate vanish completely. If there is a theory of long-run profits, it is a theory about the determination of the normal rate of profit. This paper challenges this long-held tradition in economics. It uses a simple evolutionary model of Iwai (*Journal of Economic Behavior and Organization* 5, 1984, 321-351) to demonstrate that what the economy will approach over a long passage of time is not a classical or neoclassical equilibrium of uniform technology but a statistical equilibrium of technological disequilibria which reproduces a relative dispersion of efficiencies in a statistically balanced form. As Joseph Schumpeter once remarked, “surplus values (profits in excess of normal rate) may be impossible in perfect equilibrium, but can be ever present because that equilibrium is never allowed to establish itself.”

The paper also shows that this evolutionary model behaves like a neoclassical growth model if we ignore all the complexity of the evolutionary processes working at the microscopic level and only look at the macroscopic performance. It thus provides a critique of the neoclassical growth accounting which decomposes the overall growth process into a movement along an aggregate production function and an autonomous shift of that function.

0. Introduction.

The subtitle of this paper may sound a contradiction in terms. In the traditional economic theory, by which I include both classical and neoclassical economics, the long-run state of an economy is an equilibrium state and the long-run profits (if they ever exist) are equilibrium phenomena. *Fig.1* illustrates this by drawing two supply curves that can be found in any textbook of economics. In the upper panel is an upward-sloping supply curve which aggregates diverse cost conditions of the existing firms in an industry. Its intersection with a downward-sloping demand curve determines an equilibrium price, which in turn determines the amount of profits (represented by the shaded triangle) accruing to the industry as a whole. As long as the supply curve is upward-sloping, an industry is able to generate positive profits.

<Insert *Fig.1* around here.>

In traditional theory, however, this is merely a description of the ‘short-run’ state of an industry. Whenever there are positive profits, existing firms are encouraged to expand their productive capacities and potential firms are induced to enter the industry, both making the supply curve flatter and flatter. This process will continue until the industry supply curve becomes totally horizontal, thereby wiping out any opportunity for positive profits. The lower panel of *Fig.1* describes this ‘long-run’ state of the industry.

This implies that if there are any profits in the long-run, it must be the ‘normal’ profits which have already been incorporated into cost calculations. In fact, it is how to explain the fundamental determinants of these normal profits which divides the traditional economic theory into classical and neoclassical approaches. Classical economics (as well as Marxian economics) has highlighted an inverse relationship between the normal profit rate and the real wage rate, and reduced the problem of determining the former to that of determining the latter and ultimately to that of distributional conflicts between classes. Neoclassical economics has identified the normal profit rate

with the interest rate plus a risk premium and reduced the problem of its determination to that of characterizing equilibrium conditions for intertemporal resource allocation under uncertainty. But no matter how opposed their views might appear over the ultimate determinants of normal profits, they share the same 'equilibrium' perspective on long-run profits -- any profits in excess of the normal rate are 'disequilibrium' phenomena which are bound to disappear in the long-run.

It is Joseph Schumpeter who gave us a powerful alternative to this deep-rooted 'equilibrium' tradition in the theory of long-run profits. According to Schumpeter, it is through an "innovation" or "doing things differently" that positive profits emerge in the capitalist economy. "The introduction of new commodities..., the technological change in the production of commodities already in use, the opening-up of new markets or of new sources of supply, Taylorization of work, improved handling of material, the setting-up of new business organizations"¹ etc. allow the innovators to charge prices much higher than costs of production. Profits are thus the premium put upon innovation. Of course, the innovator's cost advantage does not last long. Once an innovation is successfully introduced into the economy, "it becomes much easier for other people to do the same thing."² A subsequent wave of imitations soon renders the original innovation obsolete and gradually wears out the innovator's profit rate. In the long-run, there is therefore an inevitable tendency towards classical or neoclassical equilibrium which does not allow any positive profits in excess of the normal rate. And yet Schumpeter argued that positive profits will never disappear from the economy because capitalism is "not only never but never can be stationary." It is an "evolutionary process" that "incessantly revolutionizes the economic structure *from within*, incessantly destroying an old one, incessantly creating a new one."³ Indeed, it is to destroy the tendency towards classical

¹ Schumpeter [1939], p.84.

² Schumpeter [1939], p.100.

³ Schumpeter [1950], p. 83.

or neoclassical equilibrium and to create a new industrial disequilibrium that is the function the capitalist economy has assigned to those who carry out innovations. “Surplus values [i.e., profits in excess of normal rate] may be impossible in perfect equilibrium, but can be ever present because that equilibrium is never allowed to establish itself. They may always tend to vanish and yet be always there because they are incessantly recreated.”⁴

It is the first objective of this paper to formalize this grand vision of Joseph Schumpeter from the perspective of evolutionary economics.⁵ Indeed, in my previous papers [1984a] and [1984b], I developed a simple evolutionary model of industrial dynamics and analyzed the evolutionary process of an industry’s state of technology as an aggregate outcome of dynamic interactions among innovations, imitations and growth at the micro level of firms. The present paper makes use of this evolutionary model in order to demonstrate the Schumpeterian thesis that profits in excess of normal rate will never disappear from the economy no matter how long it is run. Indeed, it will be shown that what the economy will approach over a long passage of time is not a classical or neoclassical equilibrium of uniform technology but (at best) a statistical equilibrium of technological disequilibria which reproduces a relative dispersion of efficiencies among firms in a statistically balanced form. Although positive profits are impossible in perfect equilibrium, they can be ever present because that equilibrium is never allowed to establish itself.

This paper is organized as follows. After having set up the static structure of an industry in section 2, the following three sections will examine how the firms’ capital growth, technological imitations and technological innovations respectively evolve the industry’s state of technology over time. (All the discussions in sections 3- 5 are essentially a review of the model presented in Iwai [1984b].) It will be argued that while both the differential growth rates

⁴ Schumpeter [1950], p. 28.

⁵ See, for instance, Nelson and Winter [1982], Dosi, Freeman, Nelson, Silverberg and Soete [1988] and Anderson [1994] for the comprehensive expositions of the “evolutionary perspective” in economics.

among different efficiency firms and the diffusion of better technologies through imitations push the state of technology towards uniformity, the punctuated appearance of technological innovations disrupts this equilibrating tendency. Section 6 will then turn to the long-run description of the industry's state of technology. It will indeed be shown that over a long passage of time these conflicting microscopic forces will balance each other in a statistical sense and give rise to a long-run distribution of relative efficiencies across firms. This long-run distribution will in turn allow us to deduce an *upward-sloping* long-run supply curve in section 7. The industry is thus capable of generating positive profits even in the long-run! Hence, the subtitle of this paper – ‘a disequilibrium theory of long-run profits’. Section 8 will then examine the factors determining the long-run profit rate of the industry.

The present paper will adopt the ‘satisficing’ principle for the description of firms’ behaviors – firms do not optimize a well-defined objective function but simply follow organizational routines in deciding their growth, imitation and innovation policies.⁶ Indeed, the purpose of the penultimate section 9 is to show that our evolutionary model is able to “simulate” all the macroscopic characteristics of neoclassical growth model without having recourse to the neoclassical assumption of full individual rationality. If we look only at the aggregative performance of our evolutionary economy, it is as if aggregate labor and aggregate capital together produce aggregate output in accordance with a well-defined aggregate production function with Harrod-neutral technological progress. Yet, this macroscopic picture is a mere statistical illusion. If we zoomed into the microscopic level of the economy, what we would find is the complex and dynamic interactions among many a firm’s capital growth, technological imitations and technological innovations. It is simply impossible to group these microscopic forces into a movement along

⁶ The term “satisficing” was first coined by Simon [1957] to designate the behavior of a decision maker who does not care to optimize but simply wants to obtain a satisfactory utility or return. The notion of “organizational routines” owes to Nelson and Winter [1982].

an aggregate production function and an autonomous shift of that function itself. The neoclassical growth accounting may have no empirical content at all.

Section 9 will conclude the paper.

2. Construction of the industry supply curve.

The starting point of our evolutionary model is an observation that knowledge is not a public good freely available among firms and that technologies with a wide range of efficiency coexist even in the same industry. And one of the end points of our evolutionary model is to demonstrate that technologies with a wide range of efficiency will indeed coexist even in the long-run. Let us denote by n the total number of technologies co-existing in an industry and assume that each of these technologies is of Leontief-type fixed-proportion technology with labor service as the sole variable input and capital stock as the sole fixed input. If we further assume that only labor productivity varies across technologies, we can express the i^{th} technology as:

$$(1) \quad q = \text{Min}\left[\frac{l}{c_i}, \frac{k}{b}\right],$$

where q , l and k represent final output, labor input and capital stock, and c_i and b are labor and capital coefficients. Let us choose money wage as the numeraire. Then, the labor coefficient c_i determines the unit cost of each technology up to a productive capacity k/b . I will slightly abuse the term and call c_i the ‘unit cost’ of technology i . It is then possible to rearrange the indices of technology and let c_n stand for the lowest and c_1 the highest unit cost of the industry without an loss of generality, or:

$$(2) \quad c_n < c_{n-1} < \dots < c_i < \dots < c_1 .$$

I now have to introduce several notations in order to construct the supply curve of the industry in question. Let $k_t(c_i)$ represent the sum of the capital stocks of all the firms whose unit cost is c_i at time t , and let $K_t(c_i) \equiv k_t(c_n) + \dots + k_t(c_i)$ represent the cumulative sum of all the capital stocks of the firms whose unit costs are c_i or lower at time t . The industry’s total capital stock at time t can then be represented by $K_t(c_1)$, but will be denoted simply

as K_t in the following discussion. Next, let $s_t(c_i)$ and $S_t(c_i)$ represent the ‘capital share’ and the ‘cumulative capital share’ of a unit cost c_i at time t . Of course, we have $s_t(c_i) \equiv k_t(c_i)/K_t$ and $S_t(c_i) \equiv K_t(c_i)/K_t$. As a convention, we set $S_t(c) = S_t(c_i)$ for $c_i \leq c < c_{i-1}$. Fig.2 exhibits a typical distribution of cumulative capital shares in the industry. It illustrates the ‘state of technology’ at a point in time by showing us how technologies with diverse unit costs are distributed among capital stocks of an the industry.

<Insert Fig.2 around here.>

The state of technology thus introduced, however, represents merely the production ‘possibility’ of an industry. How this possibility is actualized depends upon the price each firm is able to obtain in exchange for its product. Let us assume that the industry in question is a competitive industry in which a large number of firms are producing the same homogeneous product and charge the same price for it. Let us denote by P_t the product price (measured in terms of money wage) at time t . Then, under the assumptions of homogeneous product and fixed proportion technology, firms with unit costs strictly smaller than P_t decide to produce up to their productive capacity k/b , and firms whose unit costs are strictly higher than P_t decide to quit all production. Firms with the unit cost equal to P_t are indifferent to their production level, as long as it does not exceed their productive capacity. (We ignore here the cost associated with shutting-down of a factory as well as the cost associated with setting-up of a new production line.)

It follows that when $c_{i-1} > P_t > c_i$ the total supply of the industry product becomes equal to $K_t(c_i)/b$ and that when $P_t = c_i$ it takes any value from $K_t(c_{i+1})/b$ to $K_t(c_i)/b$. Hence, if we denote by $Q_t(P)$ the industry’s ‘short-run supply curve’ (or short-run supply correspondence, to be precise) at time t , it can be written as

$$(3) \quad Q_t(P) = K_t(c_i)/b \quad \text{if } c_i < P < c_{i-1}$$

$$\quad \varepsilon [K_t(c_{i+1})/b, K_t(c_i)/b] \quad \text{if } P = c_i .$$

Dividing this by the total productive capacity K_t/b , we can also express it as:

$$(4) \quad y_t(P) \equiv Q_t(P)b/K_t = S_t(c_i) \quad \text{if } c_i < P < c_{i-1}$$

$$\varepsilon [S_t(c_{i+1}), S_t(c_i)] \quad \text{if } P = c_i .$$

(4) is nothing but the ‘relative’ form of industry supply curve at time t , which has neutralized the scale effect of changes in the total capital stock of the industry. Since the forces governing the motion of $S_t(c)$ are in general of different nature from those governing the motion of K_t , I will be concerned mostly with this relative form of industry supply curve in what follows.⁷

<Insert Fig.3 around here.>

Fig.3 depicts the relative form of industry supply curve, $y_t(P) \equiv Q_t(P)b/K_t$, in a Marshallian diagram with prices and costs (both in terms of money wage) measured along vertical axis and quantities per unit of total productive capacity measured along horizontal axis. Indeed, it merely turns *Fig.2* around 45 degree line. It is an *upward-sloping* curve as long as different unit costs coexist within the same industry.

3. The dynamics of the state of technology under economic selection mechanism.

Any freshman knows that the industry supply curve is a horizontal sum of all the individual supply curves existing in the industry. But the problem we now have to tackle with is to ascertain how the dynamical competition among firms will mold the evolutionary pattern of the supply curve and govern the fate of the industry. This is not the problem for freshman. Since there is a one-to-one correspondence between the relative form of industry supply curve and the cumulative distribution of capital shares, the analysis of the dynamic evolution of the former can be reduced to that of the latter.

⁷ It is easy to show from (5) below that: $\dot{K}/K_t = \gamma(\log P_t - \sum_i (\log c_i) s_t(c_i)) - \gamma_0$, so that the growth rate of the industry’s total capital stock is linearly dependent on the proportional gap between the price-wage ratio P_t and the industry-wide average unit cost. If \dot{K}/K_t is pre-determined (probably by the growth rate of the demand for this industry’s products), this equation can be used to determine P_t . If, on the other hand, P_t is pre-determined (probably by the labor market conditions in the economy as a whole), this equation can be used to determine \dot{K}/K_t . In either case, the forces governing the motion of K_t are in general of the different nature from those governing the evolution of $\{s_t(c)\}$.

Now, the state of technology in our Schumpeterian industry is moved by complex interactions among the dynamic forces working at the microscopic level of individual firms -- successes and failures of technological innovations and imitations and the resulting differential growth rates among competing firms. Let us examine the effect of differential growth rates first.

We have already assumed that every firm in the industry produces the same homogeneous product and faces the same product price P_t . If the price of capital equipment can be assumed to be the same as the product price of the industry, we can calculate the profit rate of a firm with unit cost c_i as $(P_t y_t - c_i l_t) / P_t k_t = b(P_t - c_i) / P_t$, which we will approximate as $b(\log P_t - \log c_i)$ for analytical convenience. “Without development there is no profit, without profit no development,” so said our Schumpeter. “For the capitalist system ... without profit there would be no accumulation of wealth.”⁸ Our first hypothesis is about the relationship between the growth rate of capital stock and the rate of profit:

Hypothesis (CG): The capital growth rate of a firm with unit cost c_i is linearly increasing in its current rate of profit, or equal to:

$$(5) \quad \gamma(\log P_t - \log c_i) - \gamma_0 ;$$

where $\gamma > 0$ and $\gamma_0 > 0$ are given constants.

This hypothesis needs little explanation. It merely says that a higher profit rate on the existing capital stocks stimulates capital accumulation, either by influencing the expected profitability of new investment projects or by providing an internal fund for them. The parameter γ (or, more precisely, γ/b) represents the sensitivity of the firm’s growth rate to the profit rate, and the parameter γ_0 represents the rate of capital depreciation of the break-even firm. As I have already indicated in section 1, the present paper follows the strict evolutionary perspective in supposing that firms do not optimize but only ‘satisfice’ in the sense that they simply follow organizational routines in deciding their growth, imitation and innovation policies. Indeed, one of the purposes of this paper is to see how far we can go in our description of the

⁸ Schumpeter [1961], p. 154.

economy's dynamic performance without relying on the assumptions of individual optimality. We thus assume that the values of γ and γ_0 are exogenously given.

It goes without saying that such differential growth rates among firms with different cost conditions will never leave the industry's state of technology static. Indeed, *Hypothesis (CG)* allows us to deduce the following set of differential equations for the dynamics of the cumulative capital shares⁹:

$$(6) \quad \dot{S}_t(c_i) = \gamma \delta_t(c_i) S_t(c_i) (I - S_t(c_i)) \quad (i = n, n-1, \dots, i).$$

In the above equations, $\delta_t(c_i)$ represents the difference between the logarithmic average of a set of unit costs higher than c_i and the logarithmic average of a set of unit costs not higher than c_i , or:

$$(7) \quad \delta_t(c_i) \equiv \sum_{j=1}^{i-1} \frac{(\log c_j) s_t(c_j)}{S_t(c_i)} - \sum_{j=i}^n \frac{(\log c_j) s_t(c_j)}{I - S_t(c_i)} > 0.$$

Its value in general depends on t and c_i . I will, however, proceed the following analysis as if it were an exogenously given constant δ , uniform both across technologies and over time. This will simplify the exposition of our evolutionary model immensely without losing any of its qualitative nature.¹⁰

Then, we can rewrite (6) as:

$$(8) \quad \dot{S}_t(c_i) \equiv \gamma \delta S_t(c_i) (I - S_t(c_i)) \quad (i = n, n-1, \dots, i).$$

⁹ The actual derivation is as follows. $\dot{S}_t(c_i) \equiv \sum_{j=i}^n \dot{s}_t(c_j)$

$$= \sum_{j=i}^n (\dot{k}_t(c_j)/k_t(c_j) - K_t/K_t) s_t(c_j)$$

$$= \sum_{j=i}^n ((\gamma(\log p_t - \log c_j) - \gamma_0) - \sum_{h=1}^n (\gamma(\log p_t - \log c_h) - \gamma_0) s_t(c_h)) s_t(c_j) \quad \text{by (5)}$$

$$= \sum_{j=i}^n \gamma (\sum_{h=1}^n (\log c_h) s_t(c_h) - \log c_j) s_t(c_j)$$

$$= \gamma (\sum_{h=1}^{i-1} (\log c_h) s_t(c_h) S_t(c_i) + \sum_{h=i}^n (\log c_h) s_t(c_h) S_t(c_i) - \sum_{j=i}^n \log c_j s_t(c_j))$$

$$= \gamma \delta_t(c_i) S_t(c_i) (I - S_t(c_i)).$$

¹⁰ This is the simplification I also adopted in Iwai [1984b]. However, in an interesting recent article Franke [1998] indicated that the value of $\delta_t(c)$ may actually vary considerably as the parameter values of γ , ν and λ as well as the value of c vary. A caution is thus needed to use this approximation for purposes other than heuristic device.

This is a well-known ‘logistic differential equation’ with a logistic parameter $\gamma\delta$, and can be solved explicitly to yield:

$$(9) S_i(c_i) = \frac{I}{I + (I/S_{T(c_i)} - 1)e^{-\gamma\delta(t-T)}}, \quad (i = n, n-1, \dots, 1),$$

where e stands for the exponential and $T (\leq t)$ a given initial time.¹¹

<Insert Fig.4 around here.>

As the firms with relative cost advantage grow faster than the firms with relative cost disadvantage, the distribution of capital shares gradually shifts in favor of the lower unit costs, thereby reducing the average unit cost of the industry as a whole. This process then eliminates the relative cost advantage of the existing technologies one by one until the capital share of the least unit cost completely overwhelm those of the higher ones. Only the fittest will survive in the long-run state of the industry, and this of course is an economic analogue of ‘Darwinian’ natural selection mechanism. Fig.4 illustrates how this ‘economic selection’ mechanism sets each cumulative capital share in motion along a S-shaped (logistic) growth curve. In particular, the cumulative capital share of the lowest unit cost $S_i(c_n)$ is seen to grow almost exponentially when it occupies a negligible portion of the industry. As its expansion narrows its own relative cost advantage, it gradually loses its growth momentum but keeps growing nevertheless until it finally swallows the whole industry.

4. The dynamics of the state of technology under technological diffusion through imitations.

Next, let us introduce the process of technological imitations into our picture of the industry and see how it molds the dynamic motion of the state

¹¹ A logistic differential equation: $x' = ax(1-x)$ can be solved as follows. Rewrite it as: $x'/x(1-x) = a$ and integrate it with respect to t , we obtain: $\log(x) - \log(1-x) = \log(x_0) - \log(1-x_0) + at$, or $x/(1-x) = e^{at}x_0/(1-x_0)$. This can be rewritten as: $x = I/(I + (I/x_0 - 1)e^{-at})$, which is nothing but a logistic equation given by (9).

of technology. In this paper I will suppose that technology is not embodied in capital stocks and hypothesize the process of imitations as follows¹²:

Hypothesis (IM'): The probability that a firm with unit cost c_i succeeds in imitating a technology with unit cost c_j is equal to:

$$(10) \quad \mu s_t(c_j) dt \text{ if } c_j < c_i \text{ and } 0 \text{ if } c_j \geq c_i,$$

for a small time interval dt ; where $\mu (> 0)$ is assumed to be a constant uniform across firms. \diamond

One of the characteristic features of technology is its non-excludability. It may be legally possible to assign property rights to the owners of technology. But, as Arrow has remarked in his classic paper [1962], “no amount of legal protection can make a thoroughly appropriable commodity of something so intangible as information,” because “the very use of the information in any productive way is bound to reveal it, at least in part.”¹³ The above hypothesis mathematically captures such spill-over effects of technology in the simplest possible manner. It says that it is much easier for a firm to imitate a technology with high visibility, that is, with a large capital share, than to imitate a technology with low visibility, that is, with a small capital share. Needless to say, the firm never imitates the technology whose unit cost is not smaller than the one it uses currently. The imitation parameter μ in the above hypothesis represents the effectiveness of each firm’s imitative activity. In the present paper which follows an evolutionary perspective, it is again assumed to be constant over time and uniform across firms.

In order to place the effect of technological imitations in full relief, let us ignore the effect of economic selection for the time being. Then, the hypothesis (*IM'*) allows us to deduce the following set of logistic differential

¹² The reason I have designated this *Hypothesis* by (*IM'*) is to differentiate it from a slightly different hypothesis adopted in Iwai [1984a]. Its *Hypothesis (IM)* assumes that the probability of imitating a better technology is proportional to the frequency (rather than their capital share) of the firms using it. On the other hand, Iwai [1998] has adopted yet another hypothesis which assumes that firms imitate only the best practice technology and the probability of its success is proportional to the frequency of the firms using it.

¹³ p. 615.

equations as a description of the evolution of the state of technology under the sole pressure of technological imitations¹⁴:

$$(11) \quad \dot{S}_t(c_i) = \mu S_t(c_i)(I - S_t(c_i)) \quad (i = n, n-1, \dots, 1).$$

This can again be solved to yield:

$$(12) \quad S_t(c_i) = \frac{I}{1 + (I/S_{T(c_i)} - 1)e^{-\mu(t-T)}} \quad (i = n, n-1, \dots, 1).$$

We have encountered a logistic differential equation again! Since (12) is mathematically identical with (9), Fig. 4 in the preceding section again illustrates the dynamic evolution of the cumulative capacity shares under the sole pressure of technological imitations. And yet, the logic behind this second logistic equation is entirely different from that of the first logistic equation. “If one or a few have advanced with success many of the difficulties disappear,” so wrote Schumpeter, “others can then follow these pioneers, as they will clearly do under the stimulus of the success now attainable. Their success again makes it easier, through the increasingly complete removal of the obstacles..., for more people follow suit, until finally the innovation becomes familiar and the acceptance of it a matter of free choice.”¹⁵ The second logistic differential equation (12) describes this swarm-like appearance of technological imitations in the simplest possible mathematical form. In particular, it shows that the cumulative capital share

¹⁴ The actual derivation is as follows. The value of $S_t(c_i)$ increases whenever one of the firms with unit costs higher than c_i succeeds in imitating one of the technologies with unit costs c_i or lower. Indeed, because of the assumption of the disembodied nature of technology, it increases by the magnitude equal to the imitator’s capacity share. ($S_t(c_i)$ is, however, not affected by the imitation of any of the firms with unit costs c_i or less, because it only effects an infra-marginal transfer of capacity share.) Let $M - M_t(c_i)$ denote the total number of firms with unit costs higher than c_i . The average capacity share of the firms with unit costs higher than c_i is $(I - S_t(c_i))/(M - M_t(c_i))$ and the probability of a successful imitation for each of those $M - M_t(c_i)$ firms is $\mu S_t(c_i)dt$ during a small time interval dt . We can then calculate the expected increase in $S_t(c_i)$ during dt as $((I - S_t(c_i))/(M - M_t(c_i)))(\mu S_t(c_i)dt)(M - M_t(c_i)) = (\mu S_t(c_i)dt)(I - S_t(c_i))$. If the number of firms is sufficiently large, the law of large numbers allows us to use this expression as a good approximation of the actual rate of change in $S_t(c_i)$. Dividing this by dt and letting $dt \rightarrow 0$, we obtain (11).

¹⁵ Schumpeter [1961], p. 228.

of the lowest unit cost moves along a now familiar S-shaped growth path, initially growing at an exponential rate but gradually decelerating its growth rate to approach unity asymptotically. In the long-run, therefore, the lowest cost technology will dominate the whole industry, simply because it will eventually be diffused to all the firms in it. In contrast to the economic selection mechanism, which is an economic analogue of ‘Darwinian’ evolutionary process, this technological diffusion process is nothing but an economic analogue of the ‘Lamarckian’ evolutionary process.

Let us then bring back the mechanism of economic selection into our industry and add (8) to (11). The result is the third logistic differential equation in the present paper:

$$(13) \dot{S}_t(c_i) = (\gamma\delta + \mu)S_t(c_i)(I - S_t(c_i)) \quad (i = n, n-1, \dots, 1),$$

which can again be solved explicitly as:

$$(14) S_t(c_i) = \frac{I}{I + (I/S_{T(c_i)} - 1)e^{-(\gamma\delta + \mu)(t-T)}} \quad (i = n, n-1, \dots, 1),$$

for $t \geq T$. (We refrain from drawing a diagram for (14) which is qualitatively the same as Fig. 4.)

We have thus shown how the mechanism of economic selection and the process of technological diffusion jointly contribute to the logistic growth process of cumulative capital shares -- the former by amassing the industry’s capacities in the hands of the low cost firms and the latter by diffusing the advantage of the low cost technologies among imitating firms. While the former is Darwinian, the latter is Lamarckian. But, no matter how opposed the underlying logic might be, their effects upon the industry’s state of technology are the same --- the lowest cost technology will eventually dominate the whole capital stocks of the industry.

5. The dynamics of the industry supply curve under recurrent innovations.

Does this mean that the industry’s long-run state is no more than the paradigm of classical and neoclassical economics in which every market

participant is supposed to have a complete access to the most efficient technology of the economy?

The answer is, however, “No”. And the key to this negative answer lies, of course, in the phenomenon of innovation -- the carrying out of what Schumpeter called a “new combination.” Indeed, the functional role of innovative firms is precisely to destroy this tendency towards static equilibrium and to create a new industrial disequilibrium.

Suppose that at some point in time one of the firms succeeds in introducing a new technology whose unit cost c_{n+1} is smaller than c_n . Let us denote this time by $T(c_{n+1})$ and call it the ‘innovation time’ for c_{n+1} . Then, a new cumulative capital share $S_t(c_{n+1})$ emerges out of nothing at $T(c_{n+1})$. Because of the disembodied nature of technology, $S_{T(c_{n+1})}(c_{n+1})$ is identical with the capital share of the innovator of c_{n+1} . Moreover, if the innovator’s unit cost was, say, c_i before innovation, all the cumulative capital shares from $S_t(c_{i+1})$ to $S_t(c_n)$ also experience a jump of the same magnitude at time $T(c_{n+1})$. In no time the innovator starts to expand its capital stocks rapidly, which of course induces all the other firms to seek the opportunities to imitate its technology. Through such selection mechanism and diffusion process, the newly created cumulative capital share begins to follow a S-shaped growth curve described by (14).

<Insert Fig. 5 around here.>

Innovation is not a single-shot phenomenon, however. No sooner than an innovation occurs, a new round of competition for a better technology begins. And no sooner than a new winner of this game is named, another round of technological competition is set out. The process repeats itself forever, and technologies with ever lower unit costs, $c_{n+2} > c_{n+3} > \dots > c_N > \dots$ will be introduced into an industry one by one at their respective innovation times $T(c_{n+2}), T(c_{n+3}), \dots, T(c_N), \dots$

Fig.5 shows how the industry’s state of technology evolves over time now as an outcome of the interplay among three dynamical forces working in the industry -- the mechanism of economic selection, the technological diffusion

through imitations and the creative destruction of innovations. In fact, while the former two work as equilibrating forces which tend the state of technology towards uniformity, the third works as a disequilibrating force which destroys this leveling tendency. A new question then arises: is it possible to derive any law-like properties out of this seemingly erratic movement of the industry state of technology?

In order to give an answer to this question, it is necessary to introduce two more hypotheses -- one pertaining to invention and the other to innovation. The conceptual distinction between invention and innovation was very much emphasized by Schumpeter. Invention is a discovery of new technological possibility which is potentially applicable to the production processes of the economy. But, "as long as they are not carried into practice," so says Schumpeter, "inventions are economically irrelevant," and "to carry any improvement into effect is a task entirely different from the inventing of it."¹⁶

Denote then by $C(t)$ the unit cost of potentially the best possible technology at time t and call it 'the potential unit cost'. The following is our hypothesis about the process of inventions¹⁷:

Hypothesis (PC): The potential unit cost is declining at a positive constant rate λ over time.

$$(15) \quad C(t) = e^{-\lambda t},$$

where the scale of $C(0)$ is chosen to be unity.

The declining rate of potential unit cost λ reflects the speed at which the stock of technological knowledge is being accumulated by academic institutions, private firms, government agencies and amateur inventors throughout the entire economy. In the present paper which follows an evolutionary perspective, however, it is assumed to be given exogenously to the industry.

¹⁶ Schumpeter [1961], p. 88.

¹⁷ In Iwai [1998], however, I have developed an evolutionary model which does not separate innovators from inventors and assume that each innovation raises the productivity of the industry's best technology by a fixed proportion.

We are then able to characterize the notion of ‘innovation’ formally as an event in which the potential unit cost is put into actual use by one of the firms in the industry. This is tantamount to saying that when an innovation takes place at time t , it brings in a technology of unit cost $C(t)$ for the first time into an industry. This also implies that if a technology with unit cost c is presently in use, it must have been introduced at time $t = T(c)$ where $T(c)$ is the inverse function of $C(t)$ defined by:

$$(16) \quad T(C(t)) \equiv t \text{ or } C(T(c)) \equiv c .$$

The function $T(c)$ thus defined is nothing but the ‘innovation time’ for unit cost c we have already defined at the beginning of this section. Under the specification of the dynamics of potential unit cost in (15), we have $T(c) = -(\log c)/\lambda$.

Next, let us introduce the hypothesis about the process of innovations:

Hypothesis (IN-a): The probability that a firm succeeds in an innovation is equal to:

$$(17) \quad \nu dt ,$$

during any small time interval dt , where ν is a small positive constant.

The parameter ν represents the effectiveness of each firm’s innovative activity in the industry. Though its value should in general reflect a particular innovation policy the firm has come to adopt in its long-run pursuit for technological superiority, it is simply assumed to be constant over time and uniform across firms in the present paper.

Implicit in the above hypothesis is the supposition that an innovation can be introduced at any time and by any firm, irrespective of at what time and by which firm the last innovation was introduced.¹⁸ Indeed, if we let M denote the total number of firms in the industry, the probability that there is an innovation during a small time interval dt is equal to $(\nu dt)M = \nu M dt$.

¹⁸ In Iwai [1984 a] and Iwai [1998], I have also presented versions of evolutionary models which assume only the firms currently using the best technology can strike the next innovation. In this case, the process of technological innovations is no longer a Poisson process, so that it is necessary to invoke the so-called “renewal theory” in mathematical probability to analyze the long-run performance of the state of technology.

Hence, the process of technological innovations in the industry as a whole constitute a Poisson process, which is sometimes called the law of rare events. As time goes by, however, innovations take place over and over again, and out of such repetitive occurrence of rare events a certain statistical regularity is expected to emerge.

6. The state of technology in the long-run.

Indeed, not only the process of innovations but also the entire evolutionary process of the state of technology is expected to exhibit a statistical regularity over a long passage of time.

To see this, let $\hat{S}_t(c)$ denote the expected value of the cumulative capital share of c at time t . For the purpose of describing the long-run pattern of the industry's state of technology, all we need to do is to follow the path of $\hat{S}_t(c)$. Indeed, it is not hard to deduce from *Hypothesis (IN-a)* the following set of differential equations for $\hat{S}_t(c)$ ¹⁹:

$$(18) \quad \dot{\hat{S}}_t(c) = (\gamma\delta + \mu) \hat{S}_t(c)(1 - \hat{S}_t(c)) + v(1 - \hat{S}_t(c)),$$

for $t \geq T(c)$. It turns out that this is the fourth logistic differential equation of this paper, for it can be rewritten as $\dot{x} = (\gamma\delta + \mu + v)x(1-x)$ with $x \equiv (\hat{S}_t(c) + v/(\gamma\delta + \mu))/(1 + v/(\gamma\delta + \mu))$. It can thus be solved to yield:

$$(19) \quad \hat{S}_t(c) = \frac{1 + v/(\gamma\delta + \mu)}{1 + ((\gamma\delta + \mu)/v)e^{-(\gamma\delta + \mu + v)(t - T(c))}} - \frac{v}{\gamma\delta + \mu},$$

for $t \geq T(c)$.²⁰

¹⁹ The derivation is as follows. Whenever one of the firms with unit costs higher than c succeeds in innovation, the value of $S_t(c)$ increases by the magnitude equal to the innovator's capacity share. ($S_t(c)$ is, however, not affected by the innovation of any of the firms with unit costs c or less, because it only effects an infra-marginal transfer of the capacity share.) As in *note 13*, let $M - M_t(c_i)$ denote the total number of firms with unit costs higher than c_i . The average capacity share of the firms with unit costs higher than c_i is $(1 - S_t(c_i))/(M - M_t(c_i))$ and the probability of a successful innovation for each of those $M - M_t(c_i)$ firms is vdt during a small time interval dt . We can then calculate the expected increase in $S_t(c_i)$ due to an innovation as $((1 - S_t(c_i))/(M - M_t(c_i))(vdt)(M - M_t(c_i)) = (vdt)(1 - S_t(c_i))$. If we divide this by dt and add to it the effects of economic selection and technological imitations given by (13), we obtain (18).

²⁰ In deducing (19), we have employed a boundary condition: $\dot{S}^*_{T(c)}(c) = v$ or $S^*_{T(c)} = 0$.

Of course, we cannot hope to detect any regularity just by looking at the motion of expected cumulative shares $\hat{S}_t(c)$ given above, for they are constantly shifted to the lower cost direction by recurrent innovations. If, however, we neutralize such declining tendency by measuring all unit costs c relative to the potential unit cost $C(t)$ and observe the relative pattern of the cumulative capital shares, a certain regularity is going to emerge out of seemingly unpredictable vicissitude of the industry's state of technology. Let us thus denote by z the proportional gap between a given unit cost c and the current potential unit cost $C(t)$, or

$$(20) \quad z \equiv \log c - \log C(t).$$

We call this variable the 'cost gap' of a given technology at time t . Since the inverse relationship between innovation time $T(c) = -(\log c)/\lambda$ and the potential unit cost $C(t) = e^{-\lambda t}$ implies $z = \lambda(t - T(c))$, it is possible to rewrite (19) in terms of z as follows:

$$(21) \quad \hat{S}_t(c) = \tilde{S}(z) \equiv \frac{1 + \alpha}{1 + (1/\alpha)e^{-\frac{1+\alpha}{\alpha\beta}z}} - \alpha,$$

where α and β are composite parameters respectively defined by:

$$(22) \quad \alpha \equiv \frac{\nu}{\gamma\delta + \mu} \quad \text{and} \quad \beta \equiv \frac{\lambda}{\nu}.$$

This is the fifth time we have encountered a logistic curve. This time, it represents the 'long-run cumulative distribution' of cost gap z , towards which the relative form of the industry's state of technology has a tendency to approach in the long-run. This distribution is a function only of the cost gap z and is totally independent of calendar time t . *Fig.6* illustrates this distribution.

<Insert *Fig.6* around here.>

As is seen from (21), the shape of $\tilde{S}(z)$ is determined completely by two composite parameters α and β , whose values are in turn determined through (22) by such basic parameters as $\gamma\delta$, μ , ν and λ . The first composite parameter $\alpha \equiv \nu/(\gamma\delta + \mu)$ represents the relative strength between the disequilibrating force of creative-cum-destructive innovations and the joint

equilibrating force of economic selection mechanism and diffusion process through imitations. The second composite parameter $\beta \equiv \lambda/v$, on the other hand, represents the relative strength between the force of inventions and that of innovations. Since the expected rate of innovation per unit of time is $1/v$ and the reduction rate of the potential unit cost per unit of time is λ , β can also be interpreted as the expected cost reduction rate of each innovation.²¹ It is not difficult to show that²²:

$$(23) \quad \frac{\partial \tilde{S}(z)}{\partial \alpha} < 0 \quad \text{and} \quad \frac{\partial \tilde{S}(z)}{\partial \beta} < 0.$$

As is illustrated in *Fig.6*, an increase in both α and β thus shifts $\tilde{S}(z)$ clockwise, thus rendering the distribution of efficiencies across firms more disperse than before.

The long-run cumulative distribution $\tilde{S}(z)$ thus deduced is a statistical summary of the way in which a multitude of technologies with diverse cost conditions are dispersed among all the existing capital stocks of the industry. It shows that, while the on-going inventive activities are constantly reducing the potential unit cost, the unit costs of a majority of production methods actually in use lag far behind this potential one. The state of technology therefore has no tendency to approach a classical or neoclassical equilibrium of uniform technology even in the long-run state of the industry. What it approaches over a long period of time is merely a ‘statistical equilibrium of technological disequilibria.’

7. The industry supply curve in the long-run.

Now, the fact that the state of technology retains the features of disequilibrium even in the long-run does have an important implication for the nature of the industry’s long-run supply curve. For, as is seen by (4), the

²¹ In our companion paper [1998] which assumes the step-by-step nature of innovations, it is β that is assumed to be exogenously given.

²² The derivation is as follows.

$$\frac{\partial \tilde{S}(z)}{\partial \alpha} = -(e^{-(1+\alpha)z/(\alpha\beta)} - (1 - (1+\alpha)z/(\alpha\beta))) / (\alpha e^{(1+\alpha)z/(2\alpha\beta)} + \alpha e^{-(1+\alpha)z/(2\alpha\beta)})^2 < 0 \quad \text{and} \quad \frac{\partial \tilde{S}(z)}{\partial \beta} = -(1+\alpha)^2 z / (\alpha\beta (1 + e^{-(1+\alpha)z/(\alpha\beta)}))^2 < 0.$$

relative form of industry supply curve $y_t = Q_t(P_t)b/K_t$ traces the shape of $S_t(c)$, except for the portions of discontinuous jumps. Hence, if the expectation of $S_t(c)$ tends to exhibit a statistical regularity in the form of $\tilde{S}(z)$, the expectation of the relative form of the industry supply curve should also exhibit a statistical regularity in the same long-run form of $\tilde{S}(z)$. Let us denote by p_t the relative gap between a given product price P_t and the potential unit cost $C(t)$, or

$$(24) \quad p_t \equiv \log P_t - \log C(t),$$

and call it the ‘price gap’ at time t . Then, we can obtain the following proposition without paying any extra cost.

Proposition (SC): Under *Hypotheses (CG), (IM’), (PC) and (IN-a)*, the expected value of the relative supply curve of the industry $y_t = Q_t(P_t)b/K_t$ will in the long-run approach a functional form of

$$(25) \quad \tilde{S}(p_t) \equiv \frac{1 + \alpha}{1 + (1/\alpha)e^{-\frac{1+\alpha}{\alpha\beta} p_t}} - \alpha .$$

<Insert Fig.7 around here.>

Fig.7 exhibits the relative form of the industry’s long-run supply curve as a function of price gap p . As a matter of fact, it has been drawn simply by turning *Fig.6* around 45° line. It therefore moves counter-clockwise as either of the composite parameters α and β increases. This implies that the long-run supply curve becomes more upward-sloping, as the disequilibrating force of creative-cum-destructive innovations becomes stronger than the joint equilibrating force of economic selection and technological diffusion, or as the average rate of cost reduction of each innovation becomes larger.

What is most striking about this long-run supply curve, however, is not that it is the “sixth” logistic curve we have encountered in this paper but that it is an *upward-sloping* supply curve!

Let us recall the lower panel of *Fig.1* of the introductory section. It reproduced a typical shape of the long-run supply curve which can be found in any textbook of economics. This horizontal curve was supposed to describe the long-run state of the industry in which the least cost technology

is available to every firm in the industry and all the opportunities for positive profits are completely wiped out. However, the relative form of the long-run supply curve we have drawn in *Fig.7* has nothing to do with such traditional picture. There will always be a multitude of diverse technologies with different cost conditions, and the industry supply curve will never lose an upward-sloping tendency, just as in the case of the ‘short-run’ supply curve of the upper panel of *Fig.1*. There are, therefore, always some firms which are capable of earning positive profits, no matter how competitive the industry is and no matter how long it is run.

We can thus conclude that positive profits are not only the short-run phenomenon but also the long-run phenomenon of our Schumpeterian industry. It is true that the positivity of profits is a symptom of disequilibrium. But, if the industry will approach only a statistical equilibrium of technological disequilibria, it will never stop generating positive profits from within even in the never-never-land of long-run.

8. The determination of the long-run profit rate.

It is one thing to demonstrate the existence of positive profits in the long-run. It is, however, another to analyze the factors which determine the long-run profit rate.

<Insert *Fig.8* around here.>

Let us then look at *Fig.8* which superimposes a demand curve on *Fig.7*. If we suppose that this demand curve is shifting to the right at the same rate as that of the industry’s total capital stock and shifting to the bottom at the same rate as that of the potential unit cost, its relative form will become invariant over time. The intersection e^* of this relative demand curve with the long-run relative supply curve then determines the long-run equilibrium price gap p^* and the long-run equilibrium output-capacity ratio $y^* = \tilde{S}(p^*)$. Since we have approximated the profit rate $(Pq-cl)/Pk$ of each technology by $b(\log P - \log c)$, we can also express it as $b((\log P - C(t)) - (\log c - C(t))) = b(p - z)$. This is nothing but the vertical distance between a given price gap and a point on

the upward-sloping supply curve. Summing these individual profit rates from the lowest possible price gap $z = 0$ to the break-even cost gap $z = p^*$ with their capital shares $\tilde{s}(z) \equiv \tilde{S}'(z)$ as relative weights, we can finally calculate the long-run profit rate r^* of the industry as a whole. Graphically, it can be represented by the shaded area $0e^*y^*$ in Fig.8. Algebraically, it can be expressed as²³:

$$(26) \quad r^* = \int_0^{p^*} b(p^* - z)\tilde{s}(z)dz = b \int_0^{p^*} \tilde{S}(z)dz \\ = -\left(\frac{\alpha\beta b}{1+\alpha}\right)(\log(1 - y^*) + \alpha \log(1 + \frac{y^*}{\alpha})) > 0.$$

We have thus succeeded in giving a complete characterization of the long-run profit rate of our Schumpeterian industry. It is *positive*, indeed.

It is now time to do some comparative dynamics. First, demand effects. It does not require any graphical explanation to see that an upward shift of the relative demand curve raises y^* , because the supply curve is upward-sloping. This of course works to increase the long-run profit rate of the industry r^* . In fact, a differentiation of (26) with respect to y^* leads to:

$$(27) \quad \frac{\partial r^*}{\partial y^*} = \frac{\alpha\beta b}{1+\alpha} \left(\frac{1}{1-y^*} - \frac{\alpha}{\alpha+y^*} \right) > 0.$$

A further differentiation of (27) leads to:

$$(28) \quad \frac{\partial^2 r^*}{\partial y^{*2}} = \frac{\alpha\beta b}{1+\alpha} \left(\frac{1}{(1-y^*)^2} + \frac{\alpha^2}{(\alpha+y^*)^2} \right) > 0.$$

The industry's long-run profit rate r^* is thus seen to be an increasing and convex function of the equilibrium output-capacity ratio y^* .

This convex relationship between long-run profit rate and output-capital ratio would have a particularly important implication for the dynamic stability, or more appropriately, dynamic instability of our Schumpeterian

²³ The derivation is as follows. $r^* \equiv (\int_0^{p^*} ((P^*y - cl)/P^*k)kdc)/K \equiv \int_0^{p^*} b(p^* - z)\tilde{s}(z)dz = b \int_0^{p^*} \tilde{S}(z)dz = b \int_0^{\tilde{S}(p^*)} \tilde{S}(dz/d\tilde{S})d\tilde{S} = b \int_0^{\tilde{S}(p^*)} (\alpha\beta/(1+\alpha))(1/(1-\tilde{S}) - \alpha/(\alpha+\tilde{S}))d\tilde{S} = -(\alpha\beta b/(1+\alpha))(\log(1 - \tilde{S}(p^*)) + \alpha \log(1 + \tilde{S}(p^*)/\alpha))$. Noting that $q^* = \tilde{S}(p^*)$, we obtain (24).

economy. For *Hypothesis (CG)* immediately implies that the growth rate of fixed investment also becomes on average an increasing and convex function of output-capacity ratio, which is very likely to violate the stability condition for investment-saving equilibrium of the economy as a whole. In the present paper, however, we can only mention this possibility in passing and must resume our comparative dynamics.

Next, let us turn to the supply side and examine the effects of a shift of the long-run supply curve on the industry's long-run profit rate. This, however, turns out to be a far more involved exercise than that on the demand effects. I will therefore relegate the detailed discussions to *Appendix* and only summarize the results obtained therein.

When the relative demand curve is perfectly elastic with respect to price change, we have:

$$(29) \quad \left. \frac{\partial r^*}{\partial \alpha} \right|_{p^* = \text{const.}} < 0 \quad \text{and} \quad \left. \frac{\partial r^*}{\partial \beta} \right|_{p^* = \text{const.}} < 0 .$$

In this case, both an intensification of the force of innovations relative to the force of growth or imitations and an intensification of the force of invention relative to that of innovations reduce the profit rate of the industry in the long-run. The short-run effect of disequilibrating innovations will in the long-run be reversed in this case. But the assumption of perfectly elastic industry demand curve is empirically of limited relevancy (except for the case of price regulation), and we better proceed immediately to another special case.

When the relative demand curve is absolutely inelastic with respect to price change, we have:

$$(30) \quad \left. \frac{\partial r^*}{\partial \alpha} \right|_{y^* = \text{const.}} > 0 \quad \text{and} \quad \left. \frac{\partial r^*}{\partial \beta} \right|_{y^* = \text{const.}} > 0 .$$

In this case, as the disequilibrating force of creative-cum-destructive innovations becomes stronger than the equilibrating force of economic selection or swarm-like imitations, or as the average rate of cost reduction of each innovation becomes greater, the industry is expected to generate a

higher profit rate in the long-run. Innovation is not only the source of short-run profits but also the source of long-run profits in an industry with inelastic demand.

Finally, when the relative demand is neither perfectly elastic nor absolutely inelastic, we have:

$$(31) \frac{\partial r^*}{\partial \alpha} > (<) 0 \text{ and } \frac{\partial r^*}{\partial \beta} > (<) 0, \text{ when demand curve is inelastic (elastic).}$$

In this general case, as the disequilibrating force of creative-cum-destructive innovations becomes stronger than the equilibrating forces of economic selection and swarm-like imitations, or as the average rate of cost reduction of each innovation becomes greater, the industry is expected to generate a higher profit rate in the long-run, as long as the price-elasticity of demand curve is not so large. However, this tendency will be reversed when the industry demand curve becomes sufficiently elastic with respect to price change.

9. *Pseudo* aggregate neoclassical production functions.

Since the publication of Robert Solow's "Technical Change and the Aggregate Production Function" in 1957, it has become a standard technique in neoclassical growth theory to decompose the growth rate of an economy's per capita GNP into the effect of capital/labor substitution along an aggregate production function due to capital accumulation and the effect of a continuous shift of the aggregate production function itself due to technological progress. Solow found that more than 80 % of per capital GNP growth rate in the United States from 1909 to 1949 could be attributed to the technological progress and less than 20 % to the capital deepening, and opened the eyes of economists to the importance of technological progress in understanding the economic growth process. At the same time it gave rise to a well-known controversy – the so-called Cambridge-Cambridge controversy – on the concepts of aggregate production function and aggregate capital stocks, on which Solow's technique of growth accounting relied heavily. This

controversy, however, has now died out almost completely, perhaps because of its degeneration into such esoteric problems as re-switching and all that. The purpose of this section is to provide a fresh critique of the neoclassical growth theory. This time, however, the critique is much more ‘constructive’ than its predecessors, for I will not dismiss the notion of aggregate production function outright. Indeed, what I will endeavor in the rest of this section is rather to demonstrate that our evolutionary model is capable of ‘simulating’ all the characteristics of aggregate production function without having recourse to the neoclassical assumption of full individual rationality.

Let us begin this ‘simulation’ first by constructing the industry’s labor demand function. When demand is small and price P_t just covers the minimum unit cost c_n , only the firms carrying the best technology are engaged in production and the level of demand determines that of output Q_t . Because of the fixed proportion technology (I), we can represent the level of total employment associated with this output as $L_t = c_n Q_t$. When the demand reaches the total capacity of the best technology $k_t(c_n)/b = s_t(c_n)K_t/b$, a further increase in demand is absorbed solely by an increase in P_t , while output is kept at the capacity level. But when P_t reaches the second lowest unit cost c_{n-1} , the second-best technology firms start to produce and all the increase in demand is now absorbed by a corresponding increase in output. Then, the relation between output Q_t and employment L_t can be calculated by $L_t = c_n s_t(c_n)K_t/b + c_{n-1}(Q_t - s_t(c_n)K_t/b)$ until Q_t reaches the total productive capacity of the first- and second-best technology $(s_t(c_n) + s_t(c_{n-1}))K_t/b$. In general, the relation between Q_t and L_t can be given by $L_t = \sum_{j=n}^{j=i} c_j s_t(c_j) K_t/b + c_{i-1} (Q_t - \sum_{j=n}^{j=i} s_t(c_j) K_t/b) \equiv \int_0^{c_i} c dS_t(c) K_t/b + c_{i-1} (Q_t - S_t(c_i) K_t/b)$ whenever $S(c_i)K_t/b \leq Q_t < S(c_{i-1})K_t/b$. If we divide this relation by K_t/b and take its inverse, we can then construct a functional relation between the industry-wide labor-capacity ratio $x_t \equiv L_t b/K_t$ and the industry-wide output-capacity ratio $y_t \equiv Q_t b/K_t$ as:

(32) $y_t = f_t(x_t)$,

where $x \equiv \int_0^{c_i} c dS_t(c) + c_{i-1}(f_t(x) - S_t(c_i))$ whenever $S_t(c_i) \leq f_t(x) < S_t(c_{i-1})$.

<Insert Fig. 9 around here.>

Fig.9 depicts this functional relation in a Cartesian diagram which measures labor-capacity ratio x along horizontal axis and output-capacity ratio y along a vertical axis. It is evident that this relation satisfies all the properties a neoclassical production function is supposed to satisfy.²⁴ Q is linearly homogeneous in L and K , because $y \equiv Qb/K$ is a function only of $x \equiv Lb/K$. Though not smooth, this relation also allows a substitution between K_t and L_t and satisfies the marginal productivity principle: $\partial y_t / \partial x_t \leq 1/P_t \leq \partial^+ y_t / \partial x_t$. Here, $1/P_t$ represents a real wage rate because of our choice of money wage rate as numeraire and $\partial y / \partial x$ and $\partial^+ y / \partial x$ represent left- and right-partial differential, respectively. Yet, the important point is that this is *not* a production function in the proper sense of the word! It is a mere theoretical construct that has little to do with the actual technological conditions of the individual firms working in the industry. As a matter of fact, the technology each firm uses is a Leontief-type fixed proportion technology (I) which does not allow any capital/labor substitution. It is in this sense that we call the relation (32) a ‘short-run *pseudo* aggregate production function,’ with an emphasis on the adjective: ‘pseudo.’

The shape of the short-run pseudo production function $y = f_t(x)$ is determined by a distribution of capital shares $\{s_t(c_i)\}$ across technologies. Hence, as this distribution changes, the shape of this short-run function also changes. And in our Schumpeterian industry, the distribution of capital shares is incessantly changing over time as the result of dynamic interplay among capital growth, technological innovations and technological imitations. The most conspicuous feature of the short-run pseudo production function is, therefore, its instability.

²⁴ See Sato [1975] for the general discussions on the aggregation of micro production functions.

In the long-run, however, we know we can detect a certain statistical regularity in the distribution of capital shares $\{s_t(c_i)\}$ out of its seemingly unpredictable movement. We can thus expect to detect a certain statistical regularity in the pseudo production function as well out of its seemingly unpredictable movement. Let \hat{x} and \hat{y} denote the expectation of labor-capital ratio $x \equiv Lb/K$ and of output-capacity ratio $y \equiv Qb/K$, respectively. Then, we indeed arrive at²⁵:

Proposition (PF): Under Hypotheses (CG), (IM'), (PC) and (IN-a), the functional relationship between the expected labor-capital ratio and the expected output-capital ratio will in the long-run take the form of :

$$(33) \hat{y} = \tilde{f}(\hat{x}e^{\lambda t}),$$

where the function $\tilde{f}(\cdot)$ is defined implicitly by the following identity:

$$(34) xe^{\lambda t} \equiv \int_0^{\tilde{f}(xe^{\lambda t})} \left(\frac{\alpha + y}{\alpha(1-y)} \right)^{\frac{\beta\alpha}{1+\alpha}} dy.$$

<Insert Fig. 10 around here.>

At the seventh time, we have finally graduated from the tyranny of logistic equations. What we have obtained here is a well-behaved function which satisfies all the characteristics that a neoclassical production function should have. Indeed, it is not hard to show that $\tilde{f}(0) = 0$, $\tilde{f}'(\cdot) > 0$ and $\tilde{f}''(\cdot) < 0$.²⁶ It is as if total labor force L and total capital stock K produce the total output Q in accordance with an aggregate neoclassical production function with

²⁵ The derivation of this *Proposition* is as follows. Since the short-run 'pseudo' production function (27) implies that $x = \int_0^P cdS_t(c)$ whenever $y = S_t(P)$, we have $\hat{x} = \int_0^P cd\hat{S}_t(c)$ whenever $\hat{y} = \hat{S}_t(p)$. But from (21) we then have $\hat{x} = \int_0^P cd\tilde{S}(z) = \int_0^P e^{z+\log C(t)} d\tilde{S}(z) = e^{-\lambda t} \int_0^P e^z d\tilde{S}(z) = e^{-\lambda t} \int_0^{\tilde{S}(p)} e^{z(\tilde{S})} d\tilde{S} = e^{-\lambda t} \int_0^{\tilde{S}(p)} ((\alpha + \tilde{S})/(\alpha(1-\tilde{S})))^{\alpha\beta/(1+\alpha)} d\tilde{S}$ and $\hat{y} = \hat{S}(p)$. Putting these two relations together, we obtain (29).

²⁶ More precisely, we have $dy/d(xe^{\lambda t}) = ((\alpha + y)/(\alpha(1-y)))^{-\alpha\beta/(1+\alpha)} > 0$ and $d^2y/d(xe^{\lambda t})^2 = -\beta((\alpha + y)/(\alpha(1-y)))^{-\alpha\beta/(1+\alpha)-1}/(1-y)^2 < 0$.

Harrod-neutral (or pure labor augmenting) technological progress, represented by $Q = \tilde{f}(e^{\lambda t} Lb/K) b/K$. It is as if we had entered the Solovian world of neoclassical economic growth where the economy's growth process could be decomposed into the capital-labor substitution along an aggregate neoclassical production function and the constant outward shift of the aggregate neoclassical production function itself. This is, however, a mere statistical illusion! If we zoomed into the microscopic level of the economy, what we would find is the complex and dynamic interactions among many a firm's capital growth, technological imitations and technological innovations. In fact, as is seen from (34), the functional form of $\tilde{f}(\cdot)$ is a complex amalgam of such basic parameters of our Schumpeterian model as $\alpha \equiv v/(\gamma\delta+\mu)$ and $\beta \equiv \lambda/v$. It is just impossible to disentangle various microscopic forces represented by these parameters and decompose the overall growth process into a movement along a well-defined aggregate production function and an outward shift of the function itself.²⁷ We are after all living in a Schumpeterian world where the incessant reproduction of technological disequilibria prevents the aggregate relation between capital and labor from collapsing into the fixed proportion technology of individual firms. It is, in other words, its non-neoclassical features that give rise to the illusion that the industry is behaving like a neoclassical growth model. It is for this reason we will call the relation (33) 'long-run *pseudo* aggregate production function.'

9. Concluding remarks.

In the traditional economic theory, whether classical or neoclassical, the long-run state of the economy is an equilibrium state and the long-run profits

²⁷ It is true that in the present model the rate of Harrod-neutral technical progress in our pseudo aggregate production function is a given constant λ which is determined exogenously by inventive activities outside of the industry. However, in some of the models presented in a companion paper (Iwai [1998]) this rate becomes also an amalgam of the parameters representing the forces of economic selection, technological diffusion and recurrent innovations.

are equilibrium phenomena. If there is a theory of long-run profits, it must be a theory about the determination of the normal rate of profit.

This paper has challenged this long-held tradition in economics. It has introduced a simple evolutionary model which is capable of analyzing the evolutionary process of the state of technology as a dynamic interplay among many a firm's growth, imitation and innovation activities. And it has demonstrated that what the economy will approach over a long passage of time is not a classical or neoclassical equilibrium of uniform technology but a statistical equilibrium of technological disequilibria which maintains a relative dispersion of efficiencies in a statistically balanced form. Positive profits will never disappear from the economy no matter how long it is run. 'Disequilibrium' theory of 'long-run profits' is by no means a contradiction in terms.

Not only is a disequilibrium theory of long-run profits possible, but it is also 'operational.' Indeed, our evolutionary model has allowed us to calculate (only with pencils and paper) the economy's long-run profit rate as an explicit function of the model's basic parameters which represent the forces of economic selection, technological diffusion, recurrent innovations and steady inventions. "Without development there is no profit, without profit no development," to quote Joseph Schumpeter once more.²⁸ The model we have presented in this paper can thus serve as a foundation, or at least as a building block, of the theory of 'long-run development through short-run fluctuations' or 'growth through cycles.' To work out such a theory in more detail is of course an agenda for the future research.

The present paper has adopted the so-called 'satisficing' principle in its description of the firms' behaviors – firms do not optimize a well-defined objective function but simply follow fixed organizational routines in deciding their growth, imitation and innovation policies. Indeed, one of the purposes of this paper was to see how far we can go in our representation of the

²⁸ Schumpeter [1961], p. 154.

economy's dynamic performance without relying on the neoclassical assumption of full individual rationality. And it has even succeeded in 'simulating' all the macroscopic characteristics of neoclassical growth model. And yet, there is no denying that our strict evolutionary assumption of fixed organizational routines is as unrealistic as the neoclassical assumption of fully rational decision-making is. Where have all these organizational routines come from? Another important agenda for the future research is to work out the very evolutionary process of these routines by injecting at least a modicum of rationality into our firms' headquarters. This will not turn our evolutionary model into a neoclassical model. But it will, I hope, furnish us with a common ground with the recently emerged and rapidly growing literature on endogenous growth in neoclassical economics.²⁹

²⁹ On endogenous growth literature, see such works as Aghion and Howitt [1992, 1997], Grossman and Helpman [1993], Romer [1990] and Segerstrom [1991]. They are all based on the assumption of individual rationality which extends over an infinite horizon.

<Appendix: Comparative dynamics of the supply-side determinants of the long-run profit rate>

The purpose of this *Appendix* is to do some comparative dynamics on the supply-side determinants of the long-run profit rate and deduce (29), (30) and (31).

Consider first the case of perfectly elastic demand curve. Although the economic relevancy of this special case is of limited nature, it serves as a useful benchmark for the other cases. *Fig. A1* juxtaposes a horizontal demand curve on the relative form of a long-run supply curve. We already know from section 8 that an increase in either α or β moves the inverted logistic shape of the supply curve counter-clockwise. As is seen from *Fig. A1*, such a supply curve shift transfers the equilibrium point from e^* to e^{**} along the horizontal demand curve and squeezes the long-run profit rate by the magnitude equal to $A \equiv \theta e^* e^{**}$. We can easily confirm this graphical exposition by differentiating (26) with respect to α and β , keeping the value of p^* constant. We then have:

$$\begin{aligned}
 (A1) \quad \left. \frac{\partial r^*}{\partial \alpha} \right|_{p^* = \text{const.}} &= b \int_0^{p^*} \frac{\partial \tilde{S}(z)}{\partial \alpha} dz \equiv -A_\alpha \\
 &= -\frac{\beta b}{\alpha(1+\alpha)} \int_{e^{-(1+y^*)/(\alpha\beta)}}^1 \frac{u-1-\log u}{(1+u)^2} du < 0; \\
 \left. \frac{\partial r^*}{\partial \beta} \right|_{p^* = \text{const.}} &= b \int_0^{p^*} \frac{\partial \tilde{S}(z)}{\partial \beta} dz \equiv -A_\beta \\
 &= -\frac{(1+\beta)b}{\alpha\beta} \int_{e^{-(1+y^*)/(\alpha\beta)}}^1 \frac{u-1-\log u}{(1+u)^2} du < 0.
 \end{aligned}$$

This is nothing but (29) of the main text.

<Insert *Fig. A1* around here.>

Next, consider the case of absolutely inelastic demand curve. As is shown in *Fig. A2* which juxtaposes a vertical demand curve on an inverted logistic shape of the long-run supply curve, an increase in either α or β moves the latter counter-clockwise and transfers the equilibrium point from e^* to e^{**} along the vertical demand curve. This raises p^* to p^{**} , while keeping y^* the same as before. The long-run profit rate thus changes from $\theta e^* p^*$ to $\theta e^{**} p^{**}$.

We have to examine whether this amounts to an increase or decrease of r^* . To see this, *Fig. A2* decomposes this change of profit rate into two components -- $A \equiv \theta e^* e^{**}$ and $B \equiv p^* e^* e^{**} p^{**}$. The first component A represents the “loss” of profit rate due to a universal increase of cost gaps, which corresponds to the profit loss A of the previous case. In the present case of absolutely inelastic demand curve, however, there is also a “gain” of profit rate due to an increase in the long-run equilibrium price gap, and it is represented by the second component B . Moreover, if we compare A with B in *Fig. A2*, it is easy to see that the former is uniformly dominated by the latter at each output-capacity ratio. We can easily confirm this graphical exposition by differentiating (26) with respect to α and β , keeping the value of p^* constant. We then have:

$$\begin{aligned}
(A2) \quad \frac{\partial r^*}{\partial \alpha} \Big|_{y^* = \text{const.}} &= b \int_0^{\tilde{S}^{-1}(y^*)} \frac{\partial \tilde{S}(z)}{\partial \alpha} dz + b y^* \frac{\partial \tilde{S}^{-1}(y^*)}{\partial \alpha} \equiv -A_\alpha + B_\alpha \\
&= -\frac{\beta b}{(1+\alpha)^2} (\log(1-y^*)) - \frac{\alpha}{1+\alpha} \log\left(1 + \frac{y^*}{\alpha}\right) - \alpha(1+\alpha) \frac{y^*}{\alpha + y^*} \\
&> 0; \\
\frac{\partial r^*}{\partial \beta} \Big|_{p^* = \text{const.}} &= b \int_0^{\tilde{S}^{-1}(y^*)} \frac{\partial \tilde{S}(z)}{\partial \beta} dz + b y^* \frac{\partial \tilde{S}^{-1}(y^*)}{\partial \beta} \equiv -A_\beta + B_\beta \\
&= -\left(\frac{\alpha b}{1+\alpha}\right) (\log(1-y^*) + \alpha \log\left(1 + \frac{y^*}{\alpha}\right)) > 0.
\end{aligned}$$

This is (30) of the main text.

<Insert *Fig. A2* around here.>

Finally, let us consider the general case where industry demand curve is neither perfectly elastic nor absolutely inelastic. As is seen from *Fig. A3*, an increase in either α or β transfers the equilibrium point upward from e^* to e^{**} along this downward-sloping demand curve. This raises p^* to p^{**} but lowers y^* to y^{**} . r^* thus changes from $\theta e^* y^*$ to $\theta e^{**} y^{**}$, which can be decomposed again into $A \equiv \theta e^* e^{**}$ and $B \equiv p^* e^* e^{**} p^{**}$. A represents the “loss” of r^* due to a universal increase of cost gaps, and B represents the “gain” due to an increase in the long-run equilibrium price gap. However, B in *Fig. A3* is not as large as B in *Fig. A2*, for the price elasticity of the demand allows

the effect of cost increases to be absorbed not only by price hike but also by quantity reduction. This means that when the demand curve is steeply sloped, the gain component B is likely to outweigh the loss component A . But, when the demand curve becomes more price-elastic, B becomes smaller, and in the limiting case of perfectly elastic demand curve it shrinks to zero.

<Insert Fig. A3 around here.>

Mathematically, this graphical explanation can be checked in the following manner. First write down the relative form of industry demand function as $y_t = \tilde{D}(p_t)$. Then, p^* is determined by the supply-demand equation:

$\tilde{S}(p^*) = \tilde{D}(p^*)$. Differentiating this with respect to α and β and rearranging terms, we have: $\partial p^* / \partial \alpha = -p^* \partial \tilde{S}(p^*) / \partial \alpha / (\varepsilon + \eta)$ and $\partial p^* / \partial \beta = ((-p^* \partial \tilde{S}(p^*) / \partial \beta) / (\varepsilon + \eta))$, where ε and η are the price-elasticity of the supply curve and demand curve respectively defined by $\varepsilon \equiv (\partial \tilde{S}(p) / \partial p) / (\tilde{S}(p) / p)$ and $\eta \equiv -(\partial \tilde{D}(p) / \partial p) / (\tilde{D}(p) / p)$. Keeping this in mind and differentiating (24), we obtain the following expressions.

$$(A3) \quad \frac{\partial r^*}{\partial \alpha} \Big|_{\tilde{S}(p^*) = \tilde{D}(p^*)} = b \int_0^{\tilde{S}^{-1}(y^*)} \frac{\partial \tilde{S}(z)}{\partial \alpha} dz + bp^* \frac{-\partial \tilde{S}(p^*)}{\partial \alpha} \frac{1}{\eta + \varepsilon} \equiv -A_\alpha + B'_\alpha ;$$

$$\frac{\partial r^*}{\partial \beta} \Big|_{\tilde{S}(p^*) = \tilde{D}(p^*)} = b \int_0^{\tilde{S}^{-1}(y^*)} \frac{\partial \tilde{S}(z)}{\partial \beta} dz + bp^* \frac{-\partial \tilde{S}(p^*)}{\partial \beta} \frac{1}{\eta + \varepsilon} \equiv -A_\beta + B'_\beta .$$

Note that the component B' in either expression is decreasing in η . In particular, when $\eta = \infty$, B' become equal to 0, and when $\eta = 0$, B' become equal to B in (A2). Hence, we have obtained (31) of the main text.

<References>

- P. Aghion and P. Howitt [1992], "A model of growth through creative destruction," *Econometrica*, vol.60. No.2.
- [1997], "A Schumpeterian perspective on growth and competition," Chap. 8 in D. Kreps and K. Wallis (Eds.), *Advances in Economics and Econometrics: Theory and Applications*, Seven World Congress vol. II, (Cambridge University Press: Cambridge).
- E. S. Anderson [1994], *Evolutionary Economics: Post-Schumpeterian Contributions*, (Pinter: London).
- K. Arrow [1962], "Economic welfare and the allocation of resources for inventions," in R. R. Nelson (ed.), *The Role and Direction of Inventive Activity*, (Princeton University Press: Princeton).
- G. Dosi, G. Freeman, R. Nelson, G. Silverberg and L. Soete [1988] (Eds.), *Technical Change and Economic Theory*, (Pinter: London).
- R. Franke [1998], "Wave trains and long waves: a reconsideration of Professor Iwai's Schumpeterian dynamics," forthcoming in D. Dell Gatti, M. Gallegati and A. Kirman (eds.), *Market Structure, Aggregation and Heterogeneity*. (Cambridge University Press: Cambridge).
- G. M. Grossman and E. Helpman [1993], *Innovation and Growth*, (MIT Press: Cambridge).
- K. Iwai [1984a], "Schumpeterian dynamics: an evolutionary model of innovation and imitation," *Journal of Economic Behavior and Organization*, vol. 5, no.2.
- [1984b], "Schumpeterian dynamics, Part II: technological progress, firm growth and 'economic selection'," *Journal of Economic Behavior and Organization*, vol. 5, no.2.
- [1998], "Towards a disequilibrium theory of long-run profits -- Schumpeterian perspective," *Discussion Paper Series CIRJE-F-31*, December 1998 (Faculty of Economics, University of Tokyo).

- R. Nelson and S. Winter [1982], *An Evolutionary Theory of Economic Change*, (Harvard University Press: Cambridge, MA).
- P. M. Romer [1990], "Endogenous technological change," *Journal of Political Economy*, vol. 98, no. 1.
- K. Sato [1975], *Production Functions and Aggregation*, (North-Holland: Amsterdam).
- J. A. Schumpeter [1939], *Business Cycles*, (McGraw-Hill: New York).
- [1950], *Capitalism, Socialism and Democracy*, 3rd. ed., (Rand McNally: New York).
- [1961], *The Theory of Economic Development*, (Oxford University Press: Oxford).
- P. S. Segerstrom [1991], "Innovation, imitation and economic growth," *Journal of Political Economy*, vol. 99.
- H. A. Simon [1957], *Models of Man*, (Wiley: New York).
- R. M. Solow [1957], "Technical change and the aggregate production function," *Review of Economics and Statistics*.

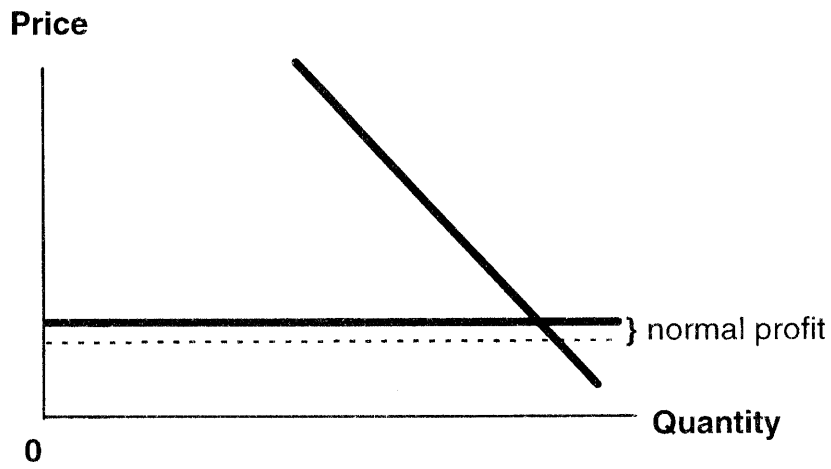
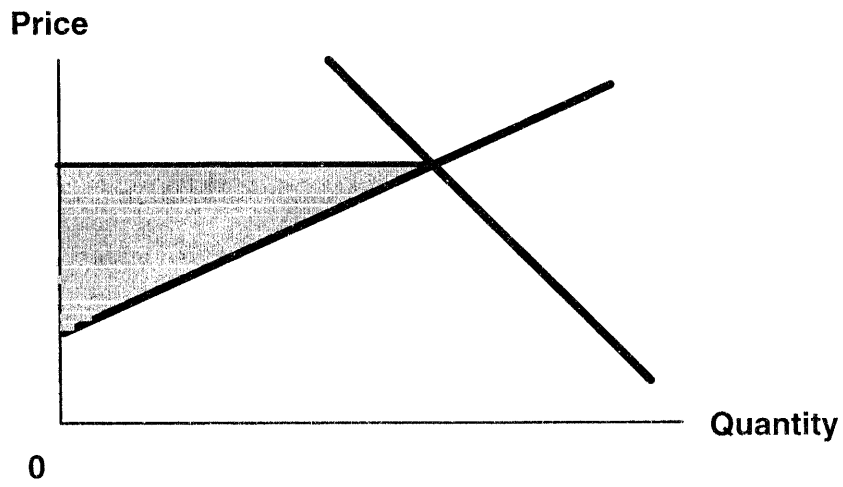


Fig. 1 : Industry supply curve in the short-run and in the long-run.

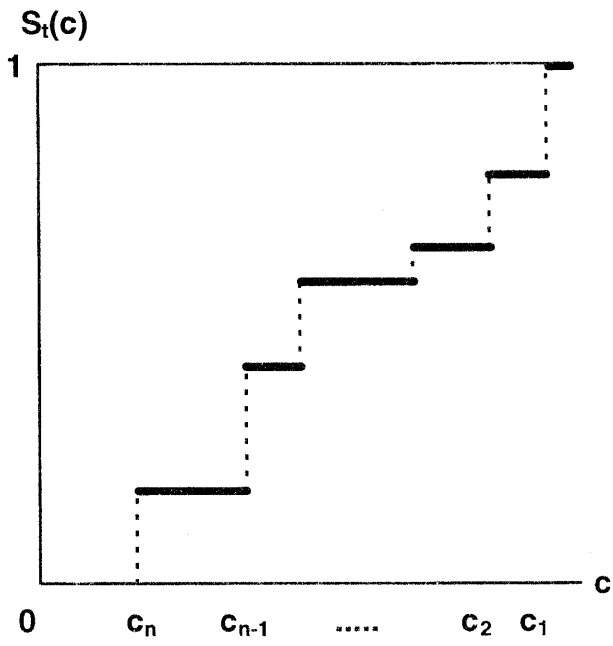


Fig. 2 : Cumulative distribution of capacity shares.

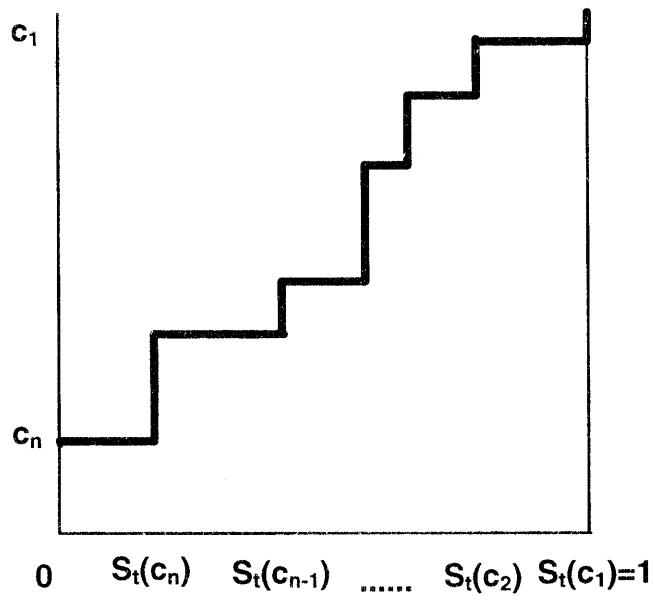


Fig. 3 : Relative form of industry supply curve.

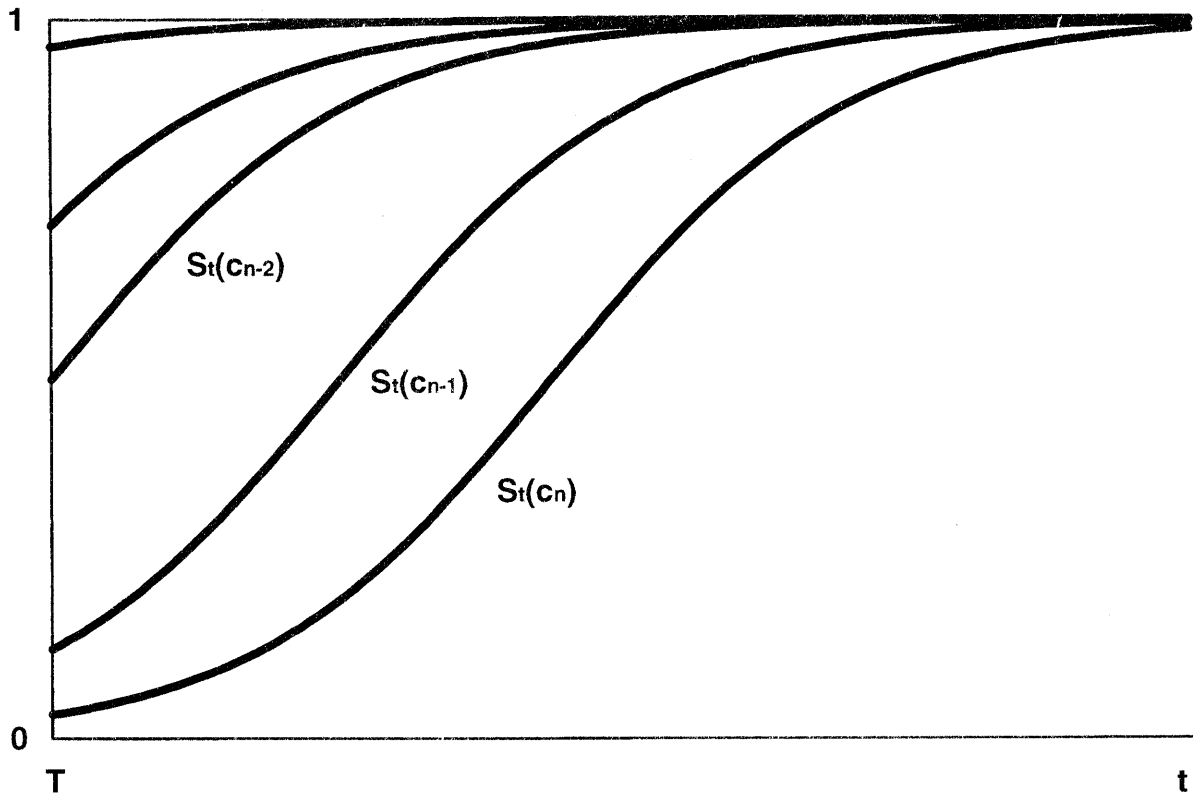


Fig. 4 : Evolution of the state of technology under the sole pressure of either economic selection or technological diffusion.

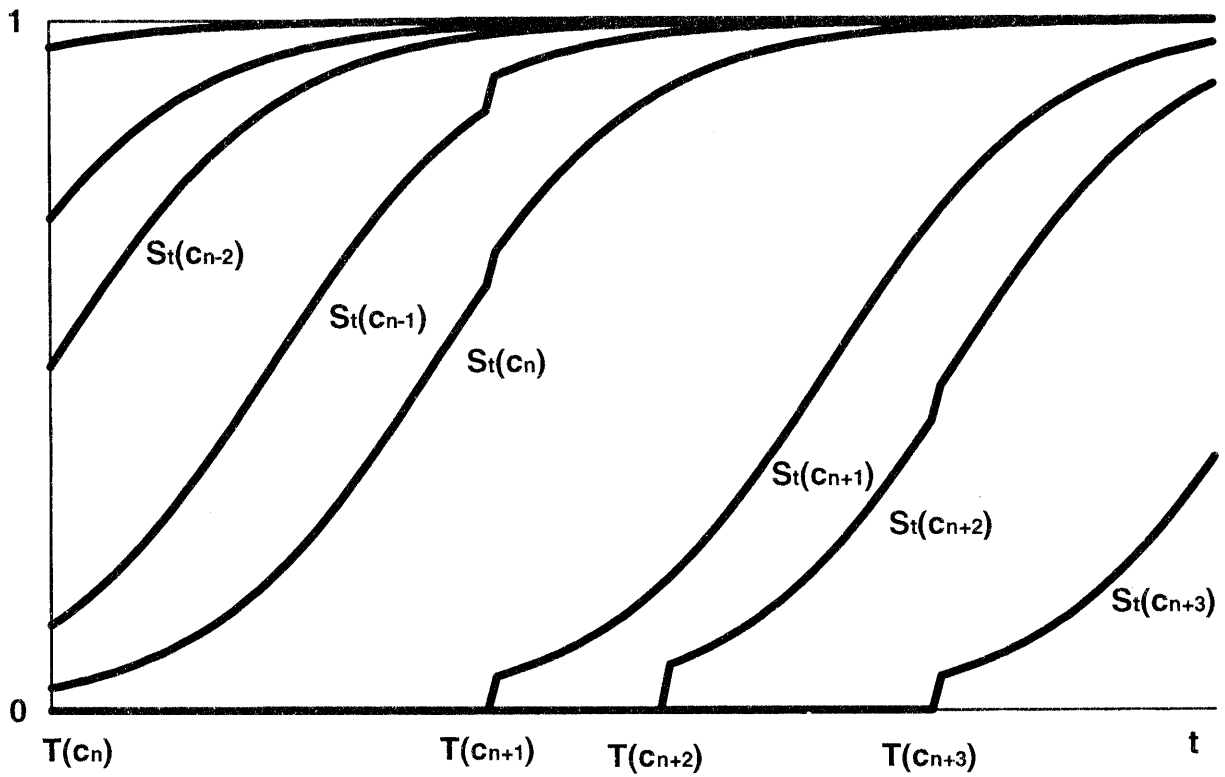


Fig. 5 : Evolution of the state of technology under the joint pressure of economic selection, technological diffusion and recurrent innovations.

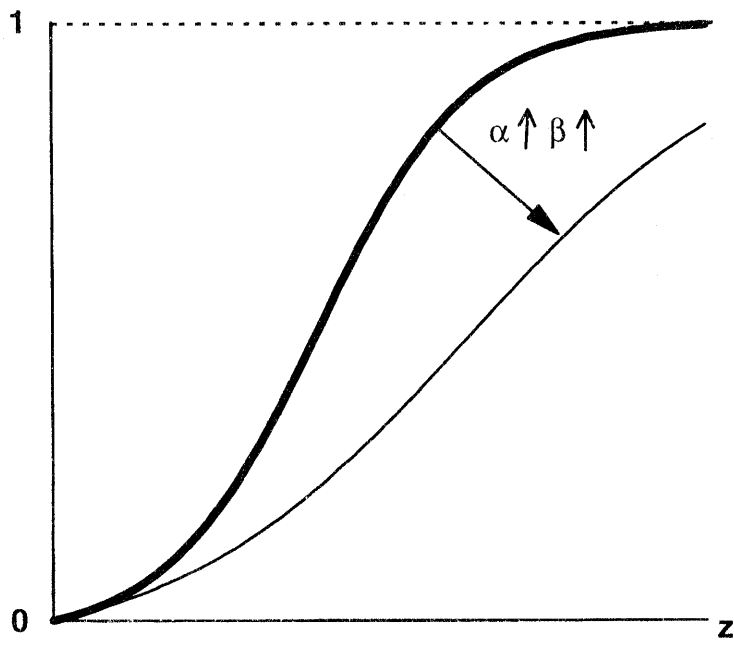


Fig. 6 : Long-run cumulative distribution of capacity shares.

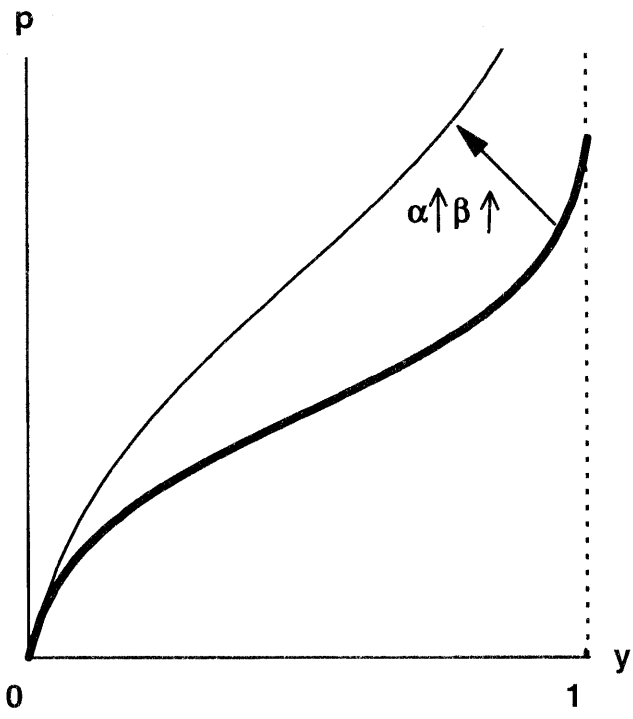


Fig. 7 : Long-run industry supply curve.

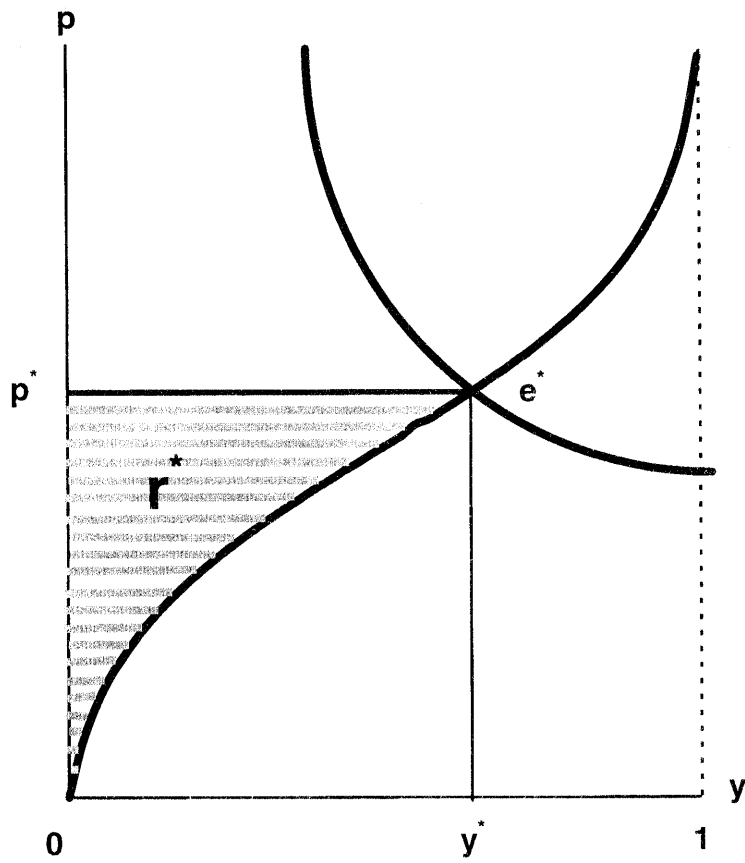


Fig. 8 : Determination of long-run profit rate.

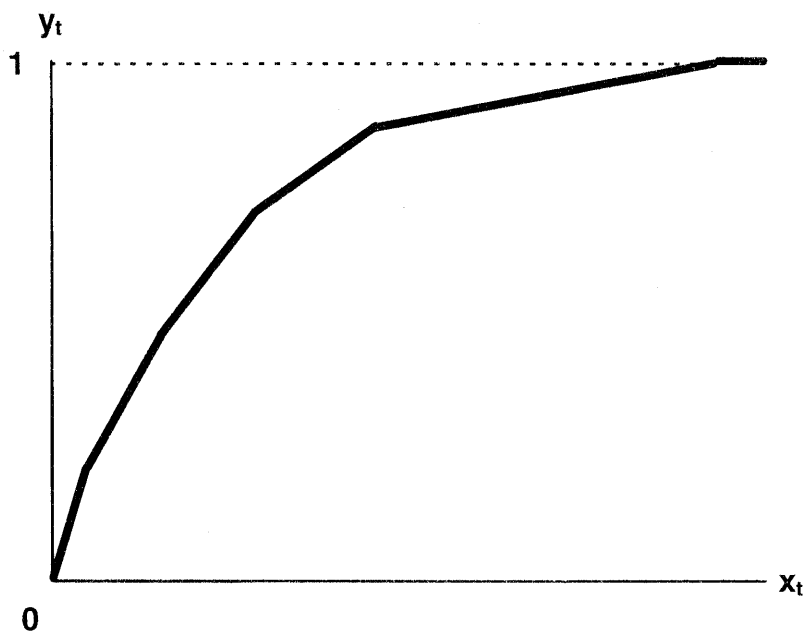


Fig. 9 : Short-run 'pseudo' aggregate production function.

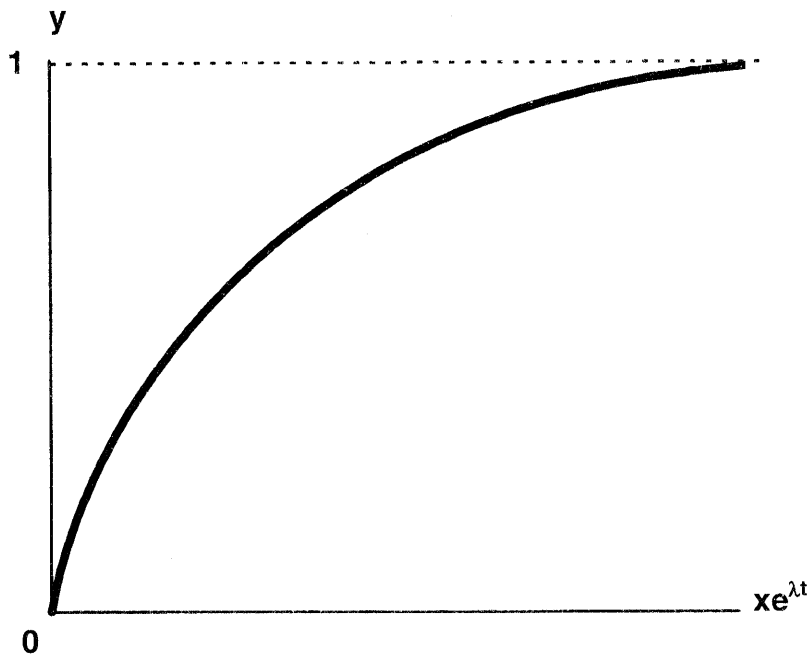


Fig. 10 : Long-run 'pseudo' aggregate production function.

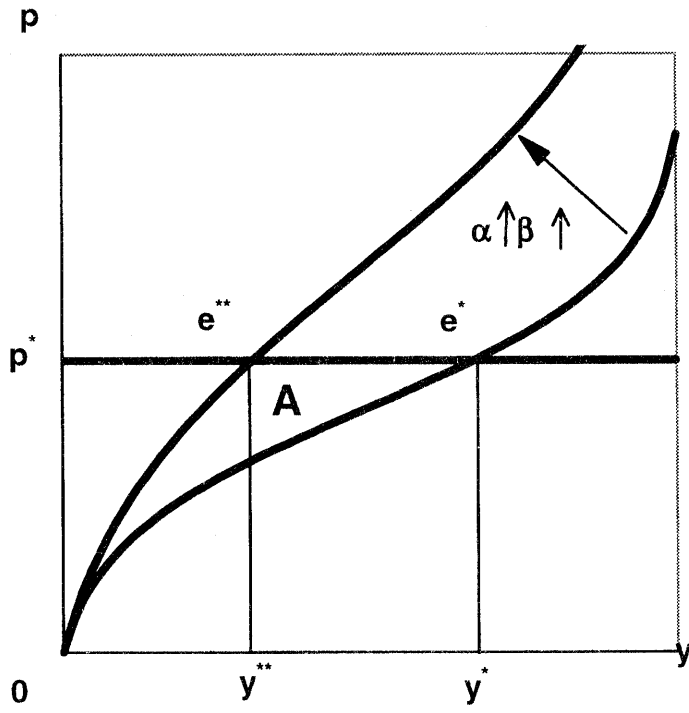


Fig. A1: The case of perfectly elastic demand curve.

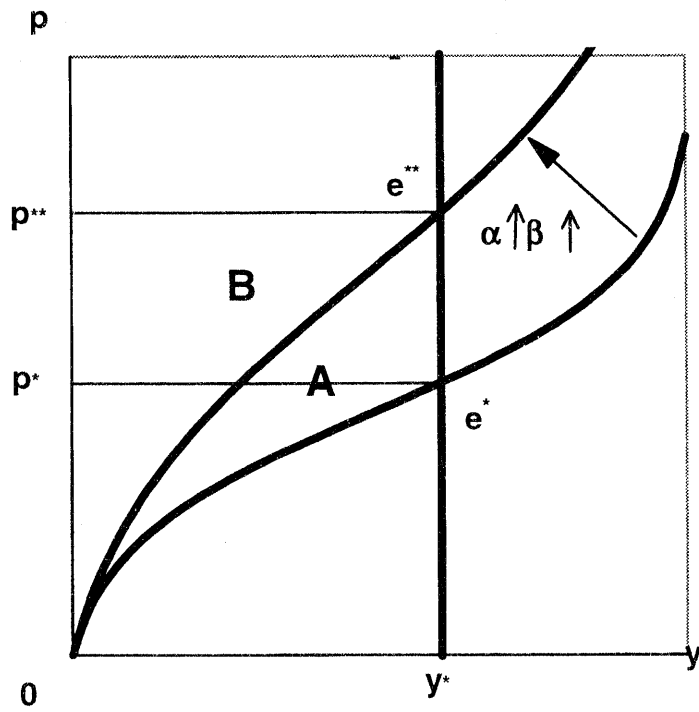


Fig. A2 : The case of absolutely inelastic demand curve.

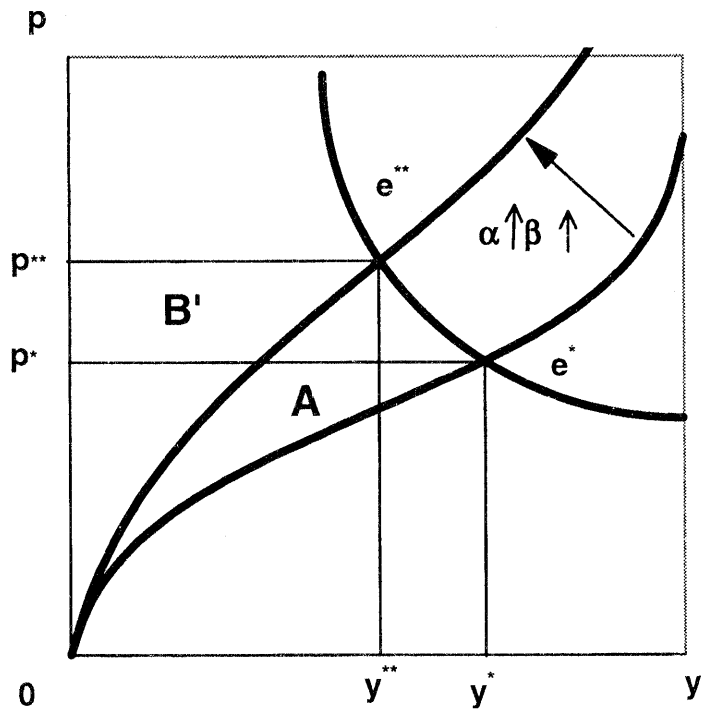


Fig. A3 : The general case.